

# T-TYPE Standard

## For modular and standard inserts

### FOCUS ON:

#### 1 Construction

By using the BC-MUL<sup>®</sup> moulding technique and use of MIL.BOX<sup>®</sup> material, **these enclosures are structurally solid and mechanically robust**, due to their increased thickness. They are particularly resistant to the main pollutants present in industrial environments. The lever enclosure pegs are built into the enclosures. The methods for fastening the connector inserts to the enclosures are made of M3 threaded metal inserts.

With reference to metal construction enclosures, which to comply with the electrical installation safety norms, must be earthed via a metal connection to the grounding terminal of the inserts mounted inside the enclosures, the new series of enclosures offers a solution for **total insulation** constructions (equivalent to class II) where necessary. The thermoplastic material used is RAL 7012 dark grey colour and UL 94V-2 grade self-extinguishing and has passed glow wire testing in accordance with the IEC (EN) 60695-2-11 at 650 °C in compliance with intended uses.

The **surface mounting** high construction housings are supplied **with an open threaded entry** and diametrically opposite a closed threaded entry, which can be **opened** by the user, if required (with suitable tool).

Manufactured from insulating material, they do not require **special reinforced insulation** as the metal versions do, for use with series **CME higher voltage** connector inserts (screw-type terminals).

#### 2 Gaskets

T-TYPE standard sealing gaskets have been produced by means of the FIPFG technology (Formed-In-Place-Foam-Gasket). They have therefore been incorporated in the base flange on bulkhead mounting housings for easier installation.

- T-TYPE standard: Built-in polyurethane gaskets
- T-TYPE/W: Viton fluoroelastomer gaskets

#### 3 Levers

The locking levers have been produced in self-extinguishing thermoplastic material, grey RAL 7001 colour.

#### 4 Dimensions

The internal dimensions allow mounting of all connector inserts in their relevant sizes. The external dimensions of the bulkhead mounting housings are similar to those of the corresponding metallic enclosures; hole fixing centres are unchanged.

Hoods offer an inner cabling space similar to that of the “high” construction models of the corresponding metal enclosures. Other characteristics are in compliance with the applicable safety standard for electrical connectors, IEC/EN 61984.

#### 5 Cable entries

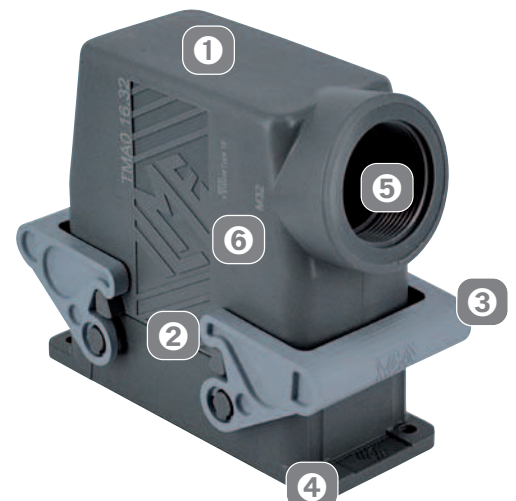
The housing and hood cable entries are available with metric thread, respectively:

- **M25 or M32** for smaller sizes “44.27” and “57.27”.
- **M32 or M40** for larger sizes “77.27” and “104.27”.

The recent standard IEC/EN 61076-7-100 regarding metric cable entries for multipole electrical connectors for heavy duty uses, which standardises some main dimensions for entries and their related accessories (gaskets, pressure nuts), have been carefully considered in the product design.

#### 6 Markings

Each enclosure carries its own part number and conformity markings.



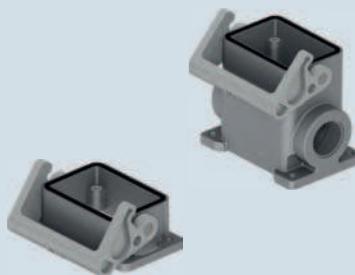


inserts:	page:
CDD ..... 24 poles + ⊕	67
CDS ..... 9 poles + ⊕	78
CSH ..... 6 poles + ⊕	91
CNE, CSE ..... 6 poles + ⊕	104
CCE ..... 6 poles + ⊕	110
CSS ..... 6 poles + ⊕	122
CT, CTSE (16A) *) ..... 6 poles + ⊕	130
CQE ..... 10 poles + ⊕	138
MIXO ..... 2 modules	179 - 215

\*) only for standard insulating version TCHI

insert centre distance:  
44 x 27 mm

### housings with single lever



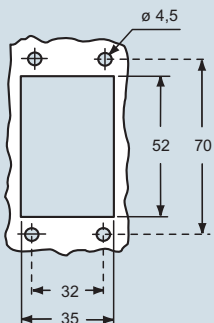
### hoods with 2 pegs



description	part No.	entry M
bulkhead mounting housing with thermoplastic lever	<b>TCHI 06 L</b>	
surface mounting housing with thermoplastic lever	<b>TMAP 06 L25</b>	<b>25</b>
surface mounting housing with thermoplastic lever	<b>TMAP 06 L32</b>	<b>32</b>
with pegs, side entry		
with pegs, side entry		

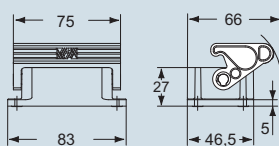
part No.	entry M
<b>TMAO 06 L25</b>	<b>25</b>
<b>TMAO 06 L32</b>	<b>32</b>
<b>TMAV 06 L25</b>	<b>25</b>
<b>TMAV 06 L32</b>	<b>32</b>

panel cut-out for bulkhead mounting housing in mm

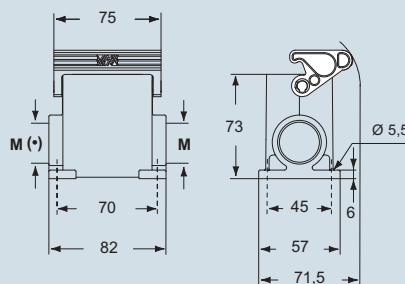


dimensions in mm

#### TCHI 06 L



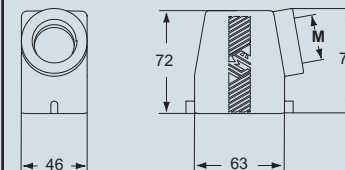
#### TMAP 06 L25 and TMAP 06 L32



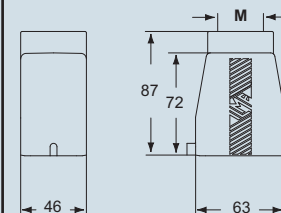
(+) The surface mounting, high construction housings are supplied with an open threaded entry (+) and diametrically opposite a closed threaded entry which can be opened by the user if required (with suitable tool).

dimensions in mm

#### TMAO 06 L25 and TMAO 06 L32



#### TMAV 06 L25 and TMAV 06 L32



**CAIUS** Type 12



ambient temperature limits -40 °C / +90 °C

dimensions shown are not binding  
and may be changed without notice



inserts:	page:
<b>CDD</b> ..... 24 poles + ⊕	67
<b>CDS</b> ..... 9 poles + ⊕	78
<b>CSH</b> ..... 6 poles + ⊕	91
<b>CNE, CSE</b> ..... 6 poles + ⊕	104
<b>CCE</b> ..... 6 poles + ⊕	110
<b>CSS</b> ..... 6 poles + ⊕	122
<b>CT, CTSE (16A) *</b> .... 6 poles + ⊕	130
<b>CQE</b> ..... 10 poles + ⊕	138
<b>MIXO</b> ..... 2 modules	179 - 215

\*) only for standard insulating version TCHI

insert centre distance:  
44 x 27 mm

**hoods with single lever top entry**



**NEW**

**covers**

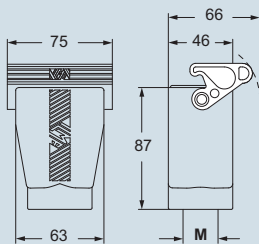


**NEW**

description	part No.	entry M	part No. (with eyelet)	part No. (with loop)
with thermoplastic lever and gasket	<b>TMAV 06 LG25</b>	<b>25</b>		
with thermoplastic lever and gasket	<b>TMAV 06 LG32</b>	<b>32</b>		
with pegs			<b>TCHC 06 L</b>	<b>TCHC 06 SL</b>
with thermoplastic lever and gasket				<b>TCHC 06 LG</b>

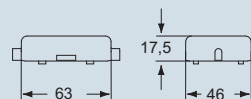
dimensions in mm

**TMAV 06 LG25 and TMAV 06 LG32**

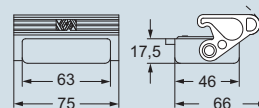


dimensions in mm

**TCHC 06 L (SL)**



**TCHC 06 LG**

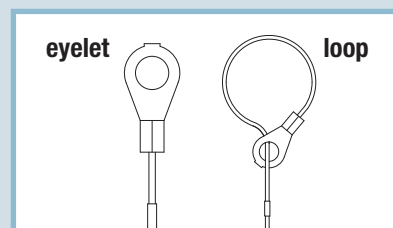


**CAIUS** Type 12



ambient temperature limits -40 °C / +90 °C

dimensions shown are not binding and may be changed without notice



T-TYPE - size 44.27

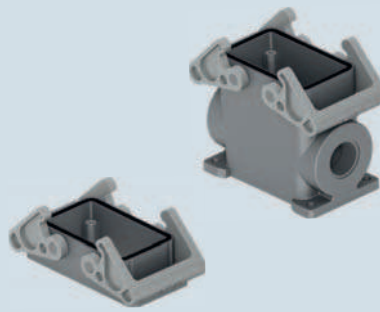


inserts:	page:
<b>CDD</b> ..... 42 poles + ⊕	69
<b>CDS</b> ..... 18 poles + ⊕	79
<b>CSH</b> ..... 10 poles + ⊕	92
<b>CNE, CSE</b> ..... 10 poles + ⊕	105
<b>CCE</b> ..... 10 poles + ⊕	111
<b>CSS</b> ..... 10 poles + ⊕	123
<b>CT, CTSE (16A) *</b> .. 10 poles + ⊕	131
<b>CQE</b> ..... 18 poles + ⊕	139
<b>CMCE</b> ..... 3+2 (aux) poles + ⊕	148
<b>CME</b> ..... 3+2 (aux) poles + ⊕	149
<b>CMSH</b> ..... 3+2 (aux) poles + ⊕	149
<b>CX</b> ..... 8/24 poles + ⊕	169
<b>MIXO</b> ..... 3 modules	179 - 215

\*) only for standard insulating version TCHI

insert centre distance:  
**57 x 27 mm**

#### housings with double lever



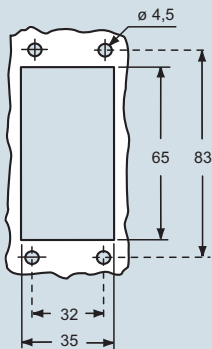
#### hoods with 4 pegs



description	part No.	entry M
bulkhead mounting housing with thermoplastic levers	<b>TCHI 10</b>	
surface mounting housing with thermoplastic levers	<b>TMAP 10.25</b>	<b>25</b>
surface mounting housing with thermoplastic levers	<b>TMAP 10.32</b>	<b>32</b>
with pegs, side entry		
with pegs, side entry		
with pegs, top entry		
with pegs, top entry		

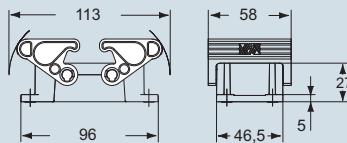
part No.	entry M
<b>TMAO 10.25</b>	<b>25</b>
<b>TMAO 10.32</b>	<b>32</b>
<b>TMAV 10.25</b>	<b>25</b>
<b>TMAV 10.32</b>	<b>32</b>

panel cut-out for bulkhead mounting housing in mm

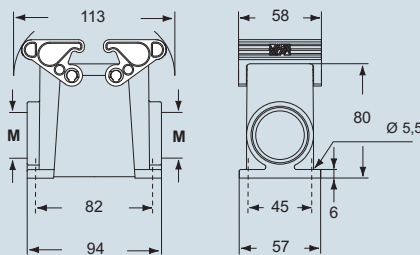


dimensions in mm

#### TCHI 10

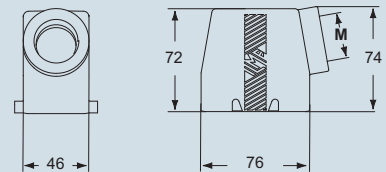


#### TMAP 10.25 and TMAP 10.32

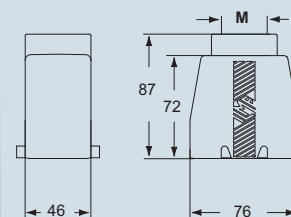


dimensions in mm

#### TMAO 10.25 and TMAO 10.32



#### TMAV 10.25 and TMAV 10.32



The surface mounting, high construction housings are supplied with an open threaded entry and diametrically opposite a closed threaded entry which can be opened by the user if required (with suitable tool).

**CRUS** Type 12



ambient temperature limits -40 °C / +90 °C

dimensions shown are not binding and may be changed without notice

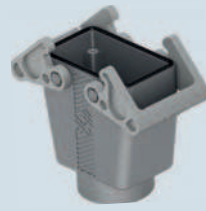
T-TYPE - size 57.27



inserts:	page:	hoods with double lever top entry
<b>CDD</b> ..... 42 poles + ⊕	69	
<b>CDS</b> ..... 18 poles + ⊕	79	
<b>CSH</b> ..... 10 poles + ⊕	92	
<b>CNE, CSE</b> ..... 10 poles + ⊕	105	
<b>CCE</b> ..... 10 poles + ⊕	111	
<b>CSS</b> ..... 10 poles + ⊕	123	
<b>CT, CTSE (16A) *</b> .. 10 poles + ⊕	131	
<b>CQE</b> ..... 18 poles + ⊕	139	
<b>CMCE</b> ..... 3+2 (aux) poles + ⊕	148	
<b>CME</b> ..... 3+2 (aux) poles + ⊕	149	
<b>CMSH</b> ..... 3+2 (aux) poles + ⊕	149	
<b>CX</b> ..... 8/24 poles + ⊕	169	
<b>MIXO</b> ..... 3 modules	179 - 215	

\*) only for standard insulating version TCHI

insert centre distance:  
**57 x 27 mm**



**NEW**

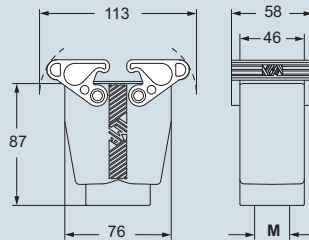


**NEW**

description	part No.	entry M	part No. (with eyelet)	part No. (with loop)
with thermoplastic levers and gasket	<b>TMAV 10 G25</b>	<b>25</b>		
with thermoplastic levers and gasket	<b>TMAV 10 G32</b>	<b>32</b>		
with 4 pegs			<b>TCHC 10</b>	<b>TCHC 10 S</b>
with 2 thermoplastic levers and gasket				<b>TCHC 10 G</b>

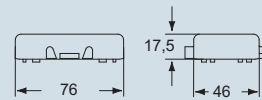
dimensions in mm

**TMAV 10 G25 and TMAV 10 G32**

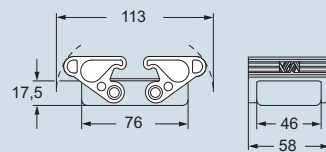


dimensions in mm

**TCHC 10 (S)**



**TCHC 10 G**

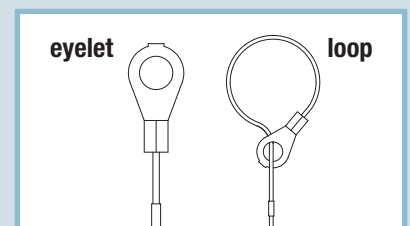


**CAIUS** Type 12



ambient temperature limits -40 °C / +90 °C

dimensions shown are not binding  
and may be changed without notice



T-TYPE - size 57.27

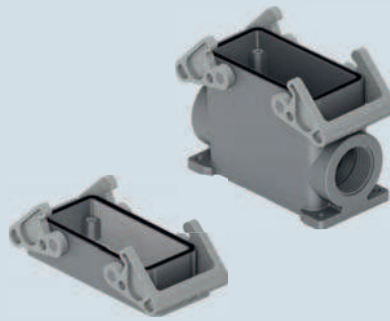


inserts:	page:
CD ..... 40 poles + ⊕	57
CDD ..... 72 poles + ⊕	70
CDS ..... 27 poles + ⊕	80
CSH ..... 16 poles + ⊕	93
CNE, CSE ..... 16 poles + ⊕	106
CCE ..... 16 poles + ⊕	112
CSS ..... 16 poles + ⊕	124
CT, CTSE (16A) * .. 16 poles + ⊕	132
CQE ..... 32 poles + ⊕	140
CQEE ..... 40 poles + ⊕	146
CMCE ..... 6+2 (aux) poles + ⊕	150
CME, CMSH.. 6+2 (aux) poles + ⊕	151
CP ..... 6 poles + ⊕	162
CX ..... 6/36 and 12/2 poles + ⊕	170-171
CX ..... 4/0 and 4/2 poles + ⊕	172
MIXO ..... 4 modules	179-215

\*) only for standard insulating version TCHI

insert centre distance: 77,5 x 27 mm

### housings with double lever



### hoods with 4 pegs

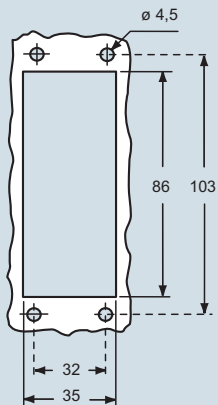


description	part No.	entry M
bulkhead mounting housing with thermoplastic levers	<b>TCHI 16</b>	
surface mounting housing with thermoplastic levers	<b>TMAP 16.32</b>	<b>32</b>
surface mounting housing with thermoplastic levers	<b>TMAP 16.40</b>	<b>40</b>
with pegs, side entry		
with pegs, side entry		

description	part No.	entry M
with pegs, top entry		
with pegs, top entry		

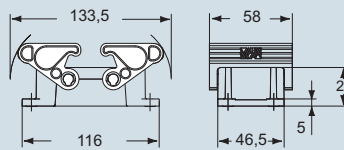
description	part No.	entry M
with pegs, top entry	<b>TMAO 16.32</b>	<b>32</b>
with pegs, top entry	<b>TMAO 16.40</b>	<b>40</b>
with pegs, top entry	<b>TMAV 16.32</b>	<b>32</b>
with pegs, top entry	<b>TMAV 16.40</b>	<b>40</b>

### panel cut-out for bulkhead mounting housing in mm

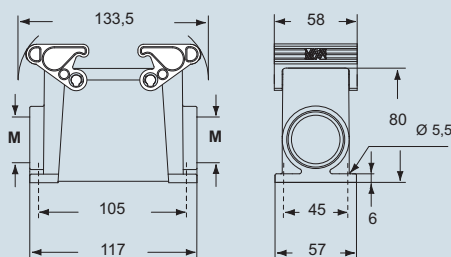


### dimensions in mm

#### TCHI 16

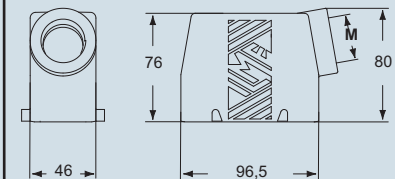


#### TMAP 16.32 and TMAP 16.40

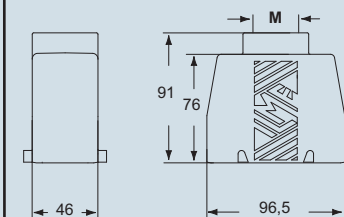


### dimensions in mm

#### TMAO 16.32 and TMAO 16.40



#### TMAV 16.32 and TMAV 16.40



The surface mounting, high construction housings are supplied with an open threaded entry and diametrically opposite a closed threaded entry which can be opened by the user if required (with suitable tool).

**CRUS** Type 12



ambient temperature limits -40 °C / +90 °C

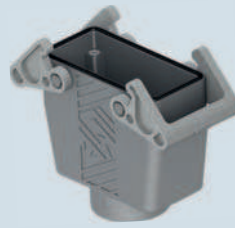
dimensions shown are not binding and may be changed without notice



inserts:	page:	hoods with double lever top entry
CD ..... 40 poles + ⊕	57	
CDD ..... 72 poles + ⊕	70	
CDS ..... 27 poles + ⊕	80	
CSH ..... 16 poles + ⊕	93	
CNE, CSE ..... 16 poles + ⊕	106	
CCE ..... 16 poles + ⊕	112	
CSS ..... 16 poles + ⊕	124	
CT, CTSE (16A) * .. 16 poles + ⊕	132	
CQE ..... 32 poles + ⊕	140	
CQEE ..... 40 poles + ⊕	146	
CMCE ..... 6+2 (aux) poles + ⊕	150	
CME, CMSH.. 6+2 (aux) poles + ⊕	151	
CP ..... 6 poles + ⊕	162	
CX ..... 6/36 and 12/2 poles + ⊕	170-171	
CX ..... 4/0 and 4/2 poles + ⊕	172	
MIXO ..... 4 modules	179-215	

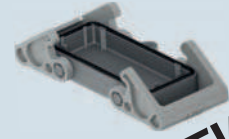
\*) only for standard insulating version TCHI

insert centre distance: 77,5 x 27 mm



**NEW**

covers

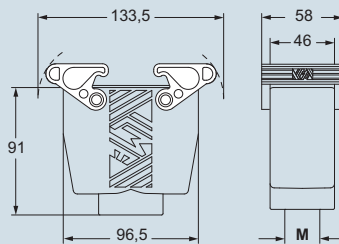


**NEW**

description	part No.	entry M	part No. (with eyelet)	part No. (with loop)
with thermoplastic levers and gasket	<b>TMAV 16 G32</b>	<b>32</b>		
with thermoplastic levers and gasket	<b>TMAV 16 G40</b>	<b>40</b>		
with 4 pegs			<b>TCHC 16</b>	<b>TCHC 16 S</b>
with 2 thermoplastic levers and gasket				<b>TCHC 16 G</b>

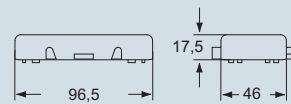
dimensions in mm

**TMAV 16 G32 and TMAV 16 G40**

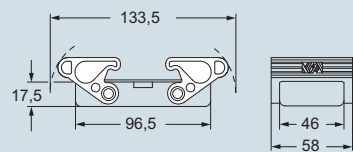


dimensions in mm

**TCHC 16 (S)**



**TCHC 16 G**

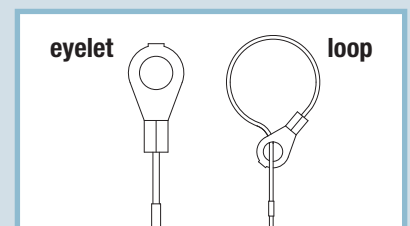


**CRUS** Type 12



ambient temperature limits -40 °C / +90 °C

dimensions shown are not binding  
and may be changed without notice



T-TYPE - size 77.27



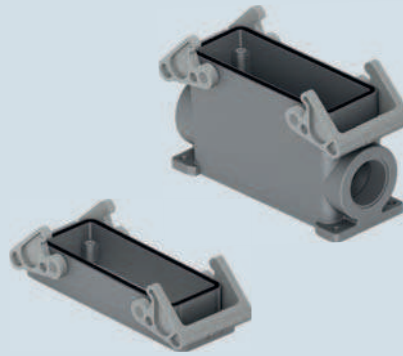


inserts:	page:
CD ..... 64 poles + ⊕	59
CDD ..... 108 poles + ⊕	72
CDS ..... 42 poles + ⊕	81
CSH ..... 24 poles + ⊕	94
CNE, CSE ..... 24 poles + ⊕	107
CCE ..... 24 poles + ⊕	113
CSS ..... 24 poles + ⊕	125
CT, CTSE (16A) * .. 24 poles + ⊕	133
CQE ..... 46 poles + ⊕	141
CQEE ..... 64 poles + ⊕	147
CMCE ..... 10+2 (aux) poles + ⊕	152
CME, CMSH 10+2 (aux) poles + ⊕	153
CMCE ..... 16+2 (aux) poles + ⊕	158
CME ..... 16+2 (aux) poles + ⊕	159
CX ..... 4/8 and 6/6 poles + ⊕	173 and 175
MIXO ..... 6 modules	179-215

\*) only for standard insulating version TCHI

insert centre distance: **104 x 27 mm**

### housings with double lever



### hoods with 4 pegs

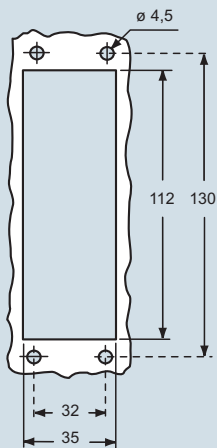


description	part No.	entry M
bulkhead mounting housing with thermoplastic levers	<b>TCHI 24</b>	
surface mounting housing with thermoplastic levers	<b>TMAP 24.32</b>	<b>32</b>
surface mounting housing with thermoplastic levers	<b>TMAP 24.40</b>	<b>40</b>
with pegs, side entry		
with pegs, side entry		

description	part No.	entry M
with pegs, top entry		
with pegs, top entry		

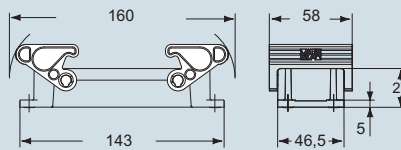
description	part No.	entry M
with pegs, side entry	<b>TMAO 24.32</b>	<b>32</b>
with pegs, side entry	<b>TMAO 24.40</b>	<b>40</b>
with pegs, top entry	<b>TMAV 24.32</b>	<b>32</b>
with pegs, top entry	<b>TMAV 24.40</b>	<b>40</b>

### panel cut-out for bulkhead mounting housing in mm

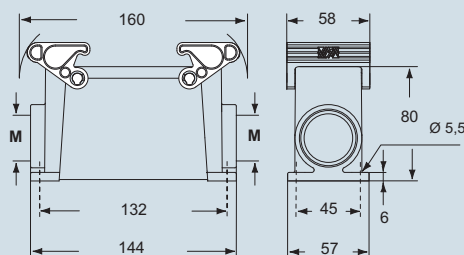


### dimensions in mm

#### TCHI 24

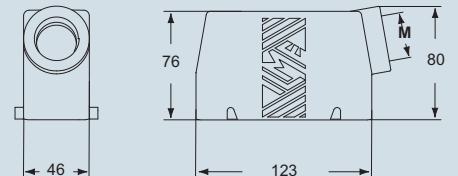


#### TMAP 24.32 and TMAP 24.40

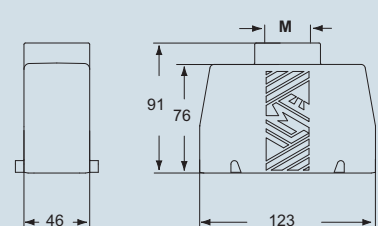


### dimensions in mm

#### TMAO 24.32 and TMAO 24.40



#### TMAV 24.32 and TMAV 24.40



The surface mounting, high construction housings are supplied with an open threaded entry and diametrically opposite a closed threaded entry which can be opened by the user if required (with suitable tool).

**ILME**® Type 12



ambient temperature limits -40 °C / +90 °C

dimensions shown are not binding and may be changed without notice



inserts:	page:
CD ..... 64 poles + ⊕	59
CDD ..... 108 poles + ⊕	72
CDS ..... 42 poles + ⊕	81
CSH ..... 24 poles + ⊕	94
CNE, CSE ..... 24 poles + ⊕	107
CCE ..... 24 poles + ⊕	113
CSS ..... 24 poles + ⊕	125
CT, CTSE (16A) *) .. 24 poles + ⊕	133
CQE ..... 46 poles + ⊕	141
CQEE ..... 64 poles + ⊕	147
CMCE ..... 10+2 (aux) poles + ⊕	152
CME, CMSH 10+2 (aux) poles + ⊕	153
CMCE ..... 16+2 (aux) poles + ⊕	158
CME ..... 16+2 (aux) poles + ⊕	159
CX ..... 4/8 and 6/6 poles + ⊕	173 and 175
MIXO ..... 6 modules	179-215

\*) only for standard insulating version TCHI

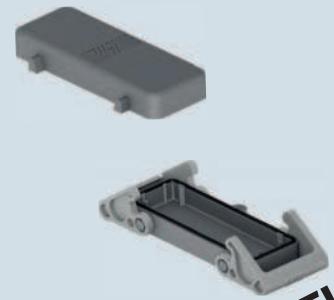
insert centre distance: **104 x 27 mm**

**hoods with double lever top entry**



**NEW**

**covers**

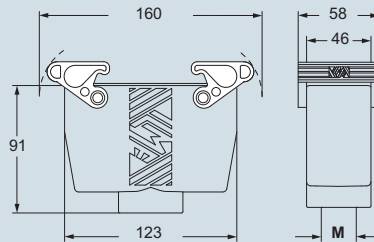


**NEW**

description	part No.	entry M	part No. (with eyelet)	part No. (with loop)
with thermoplastic levers and gasket	<b>TMAV 24 G32</b>	<b>32</b>		
with thermoplastic levers and gasket	<b>TMAV 24 G40</b>	<b>40</b>		
with 4 pegs			<b>TCHC 24</b>	<b>TCHC 24 S</b>
with 2 thermoplastic levers and gasket				<b>TCHC 24 G</b>

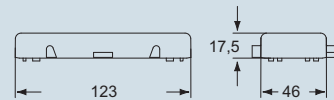
dimensions in mm

**TMAV 24 G32 and TMAV 24 G40**

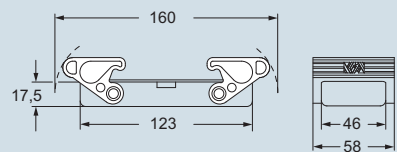


dimensions in mm

**TCHC 24**



**TCHC 24 G**

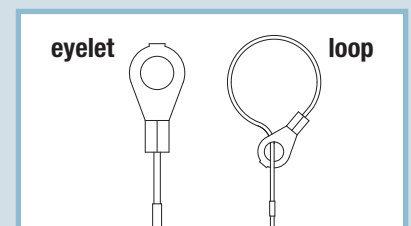


**CRUS** Type 12



ambient temperature limits -40 °C / +90 °C

dimensions shown are not binding and may be changed without notice



T-TYPE - size 104.27